

SPEED OF LIGHT: SURPRISE!

299,792.458 km/s is the speed of light in vacuum. However, according to Einstein's theory of General Relativity, the speed of light appears to vary with the intensity of the gravitational field.

But 1400 years ago it was stated in the Quran (Koran, the book of Islam) that angels travel in one day the same distance that the moon travels in 1000 lunar years, that is, **12000 Lunar Orbits / Earth Day**. Outside gravitational fields **12000 Lunar Orbits / Earth Day** turned out to be the known speed of light!

See proof: [SPEED OF LIGHT](#) . Can anyone prove us wrong?

Challenger# 

The Quran also defined:

[Time Dilation](#)
[Gravitational Fields](#)
[Pulsars and Black Holes](#)
[Wormholes \(Length Contraction\)](#)
[Dark Matter and Gravitational Lensing](#)
[Dark Energy, Redshifting and Expanding Universe](#)

Einstein's Theory of Relativity proves the Quran right.

Simple: [Celestial Motion](#), [Ice in Comets](#), [Rotation of Earth Slowing](#), [Tectonics](#), [Atmospheric Pressure](#)

⊕Speed of light 12000 Lunar Orbits/Earth Day

When we compare the speed of light in vacuum with **12000 Lunar Orbits / Earth Day** inside the gravitational field of the sun we get 11% difference. When we compare them outside the gravitational field of the sun we get zero% difference:

The distance to the sun is not a constant; so as the distance to the sun increases the difference in energy causes the length of the lunar orbit to change. When the Earth-moon system exits the solar system **12000 Lunar Orbits / Earth Day** becomes equal to the speed of light. Hence, if it is defined

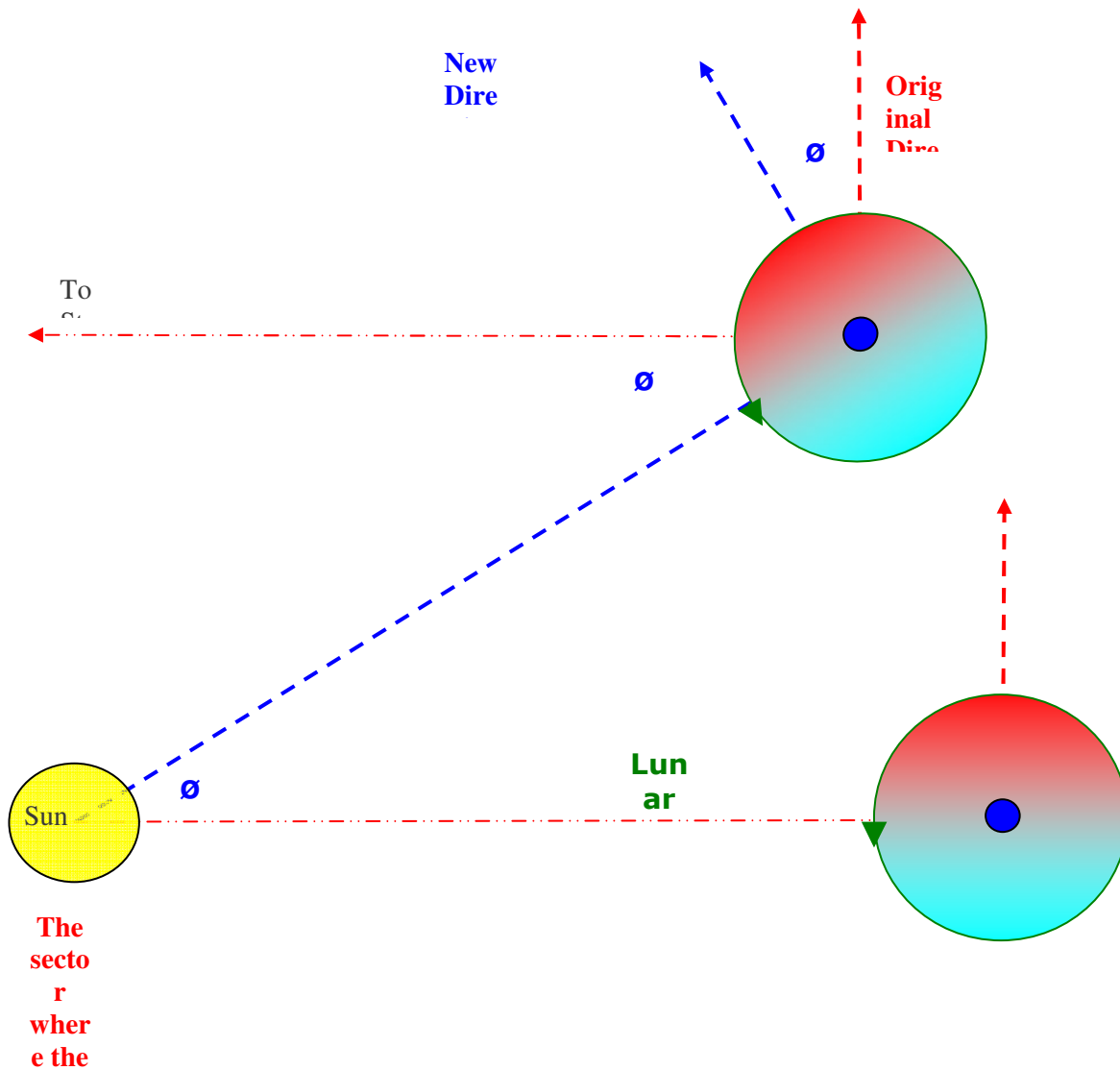
inside the gravitational field of the sun then this definition will be wrong with time; however since it is defined outside the gravitational field of the sun then this definition will be true for ever!

Moslems (Muslims) believe that angels are low density creatures, and that God created them originally from light. **They move at any speed from zero up to the speed of light.** It is the angels who carry out God's orders. Those angels take their orders from a Preserved Tablet somewhere in outer space, and not from God's Throne. They commute to and from this Preserved Tablet to get their orders from God. In the following verse, the Quran is describing how angels travel when they commute to and from this Tablet. And the speed at which they commute to and from this Tablet turned out to be the known speed of light:

[\[Quran 32.5\]](#) (Allah) Rules the cosmic affair from the heavens to the Earth. Then this affair travels to Him a distance in one day, at a measure of one thousand years of what you count.

It is the angels who carryout these orders (see Arabic wording at footnote [\[1\]](#)). Hence in 1 day, the angels will travel a distance of 1000 years of what they counted. Those people back then followed the lunar calendar and counted 12 lunar months each year. These months are related to the moon and **not related to the sun**. Since this verse is referring to distance, then Allah is saying that angels travel in one day the same distance that the moon travels in 12000 lunar orbits. Outside gravitational fields this speed turned out to be the known speed of light (the Preserved Tablet is itself outside gravitational fields).

The Earth-moon system covers an angle θ around the sun each lunar month. Every point in this orbit has a certain magnitude and a certain direction. **As the moon heads to the sun it speeds up, and as it heads away from the sun it slows down. This creates a sector of the orbit where the moon is speeding up:**



But as the Earth goes around the sun, the position of the sun relative to Earth with respect to stars is changing. **This makes the sector where the moon is speeding up move forward inside the orbit such that it points to the sun again; similarly the sector where the moon is slowing down moves forward inside the orbit such that it points away from the sun again.** Hence the entire orbit changes direction with respect to stars by the same angle it orbits the sun (twist). This means that the orbit is influenced by a net rotational force (like torque around Earth). As the distance to the sun increases to infinity, θ decreases to zero and this force decreases to zero. When we vectorially remove the energy gained from this force we can calculate the total energy and hence the length of the lunar orbit outside gravitational fields.

Time:

This table below shows the lunar month and the Earth day in both sidereal system (with respect to stars) and synodic (with respect to sun):

| Period | Synodic (sun) | Sidereal (stars) |
|-----------------|----------------------|---|
| Earth day t | 24 hours = 86400 sec | 23 h 56 min 4.0906 sec = 86164.0906 sec |
| Lunar Month T | 29.53059 days | 27.321661 days = 655.71986 hours |

When the Earth-moon system is still inside the solar system the position of the sun relative to Earth with respect to stars changes; this means that the moon has to make more than 360 degrees with respect to stars in order to point to the sun again. However when the the Earth-moon system exits the solar system the position of the sun relative to Earth with respect to stars remains the same, that is, the moon now only has to make 360 degrees with respect to stars in order to point to the sun again (the synodic periods become equal to the sidereal periods). This means that the lunar month with respect to the sun becomes equal to lunar month with respect to stars and Earth day with respect to the sun becomes equal to Earth day with respect to stars. So the 1000 lunar years with respect to sun become equal to 12000 lunar months with respect to stars.

(Also when astronomers study the energy of orbits they use the sidereal system, that is, the moon has to return to the same position with respect to stars and not return to the same position with respect to the sun.)

Distance:

Distance traveled by angels in one day = 12000 x Distance traveled by moon during one orbit

$$\Rightarrow C t' = 12000 L'$$

Where:

| | |
|----|--|
| C | Is the speed of angels, which we intend to calculate and then compare to the known speed of light (no external forces, no acceleration, no deceleration). |
| t' | Is the Earth Day defined as the time of one rotation of the Earth about its axis with respect to the stars (sidereal); i.e. 23 hr, 56 min, 4.0906 sec = 86164.0906sec. |
| L' | Is the length of the lunar orbit outside gravitational fields (no external forces, no acceleration, no deceleration). |

Length of Lunar Orbit:

Length of lunar orbit = Velocity x Time (L = V T)

The velocity of the moon is not constant. NASA measured the spontaneous velocity of the moon at various instances throughout its orbit. These measurements show that the velocity of the moon varies considerably (from 3470 km/hr up to 3873 km/hr); which means that the moon accelerates and decelerates continuously. The average lunar velocity is $V_{avg} = 3682$ km/hr.

The lunar orbit relative to Earth is a low eccentricity ellipse. Most astronomy textbooks calculate the length of the lunar orbit manually by the following equivalent circle method: The average orbital radius is $R = 384267$ km, so the length (L) of this elliptical orbit relative to Earth is:

$$L = V T = 2 \pi R$$

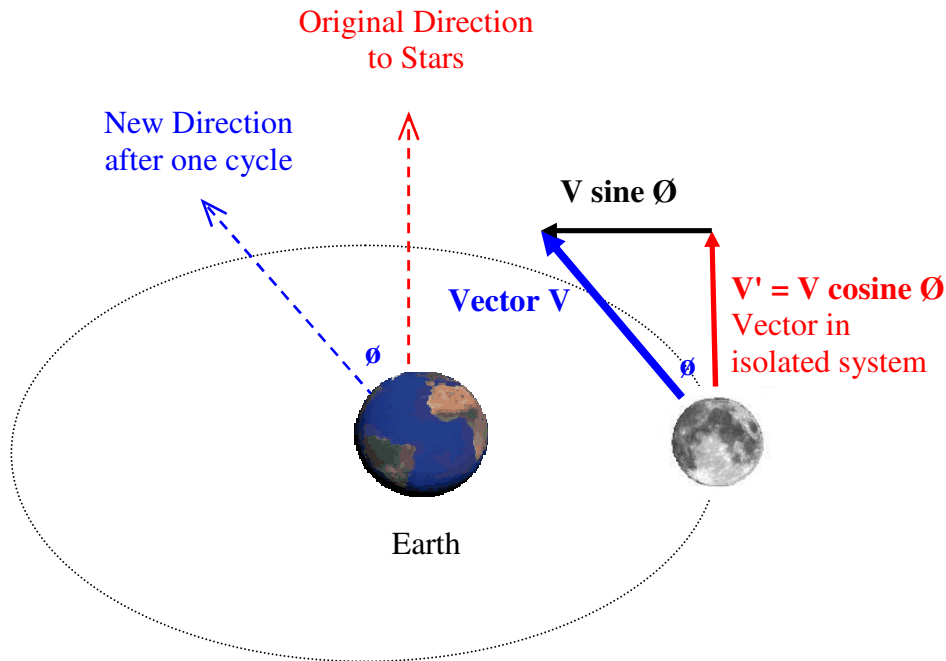
$$\Rightarrow V = 2 \pi R / T$$

Substituting $R = 384267$ km and $T =$ sidereal lunar month = 655.71986 hr:

$$V = (2 \times 3.141593 \times 384267) / 655.71986 = 3682.092 \text{ km/hr}$$

Although this velocity is correct relative to Earth, this velocity is under the influence of the gravitational pull of the sun. We can vectorially calculate the velocity of the moon relative to Earth without the gravitational pull of the sun and hence the new length of the lunar orbit:

The work done by the gravitational field of the sun by creating a net rotational force on the lunar orbit (twist) is:



Components of compounded vector $V =$ vector in the isolated Earth-moon system (no twist) plus vector acquired from the gravitational field of the sun (twist)

In the isolated Earth-moon system (no sun), the moon's isolated vector remains in the original direction with respect to stars (no twist); but in the compounded system (with sun), the moon's compounded vector changes direction by angle θ with respect to stars each cycle around Earth (twist). This means that the moon's orbital energy is the vectorial sum of the intrinsic energy of Earth-moon system (kinetic energy of Earth's spin transferred to the lunar orbit by ocean friction; see how below) plus the energy acquired from this twist.

An observer on Earth sees this force as rotational around Earth, however an observer on the sun sees this same force as radial towards the sun (not towards Earth). But no matter from where observers are looking they will all see this same force doing the same work. Since the distance to the sun is not a constant, as the distance to the sun increases to infinity the lunar orbit loses this twist; but without the energy gained from this twist the orbital radius decreases to $R' = R \cos \theta$ (see proof at footnote [2]). Hence the length of the lunar orbit becomes $L' = 2\pi R' = 2\pi R \cos \theta = L \cos \theta$ (i.e. $12000 L' / t' = 12000 L \cos \theta / t'$).

Speed of Angels:

So finally we can calculate the speed of angels outside gravitational fields and compare it to the known speed of light **299792.458 km/s**:

$$C t' = 12000 L'$$

$$\text{And } L' = L \cos\theta = V T \cos\theta$$

$$C t' = 12000 V T \cos\theta$$

$$C = (12000 V T \cos\theta) / t'$$

Substituting the NASA sidereal values of the periods T and t' (from above table); θ is 26.9295 degrees and could be manually calculated at this footnote [3]; $\cos\theta = 0.8915645$, we arrive at the speed of angels as claimed in the Quran:

$$C = (12000 \times 3682.092 \times 655.71986 \times 0.8915645) / 86164.0906$$

$$\mathbf{C = 299792.5 \text{ km/s}}$$

Exactly the known Speed of Light!!!

**SPEED OF LIGHT outside gravitational fields = 12000
Lunar Orbits/Earth Day**

**Moslems ask how could an illiterate man who lived 1400 years ago have
defined the speed of light?**

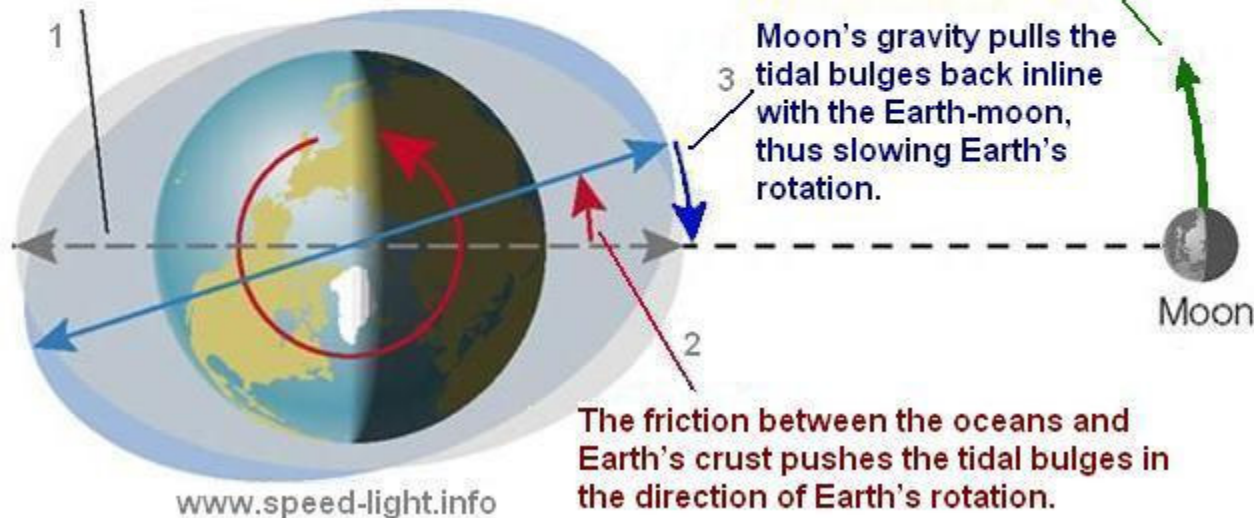
Since the distance to the sun is not a constant then if it is defined inside the gravitational field of the sun and not outside it then this definition will be wrong with time; But since it is defined outside the gravitational field of the sun then this definition will be true forever:

Ocean Friction

Do you remember the oceanic high tide and low tide? Well they are caused by lunar gravity. This figure teaches you how ocean friction transfers the kinetic energy of Earth's spin to the lunar orbit:

How ocean friction causes the moon to recede:

If there were no friction between the oceans and Earth's crust, the tidal bulges would be oriented along the Earth-moon line.



The gravitational force of the misaligned tidal bulges pushes the moon forward. This causes the moon to recede.

Moon's gravity pulls the tidal bulges back in line with the Earth-moon, thus slowing Earth's rotation.

The friction between the oceans and Earth's crust pushes the tidal bulges in the direction of Earth's rotation.

Ocean friction is causing the rotation of Earth to slow down, that is, for the days to get longer (t' increases). And as Earth's rotation slows down the moon recedes (R' increases). For the moon to orbit Earth with the same velocity and altitude but without any assistance from the sun, it needs to acquire even more energy from Earth's spin; that is t' has to increase until $R' = R$.

$$c = 12000 L' / t' = 12000 2 \pi R' / t'$$

Both R' and t' are increasing but due to a fundamental law in astronomy the ratio R' / t' remains the same: The tidal force decelerating Earth is the same force pushing the moon. Since the force pushing the moon is gravitational, then it is inversely proportional to the square of the distance to the moon. Similarly, this same force decelerating Earth is proportional to the change in kinetic energy in Earth's spin, that is, it is inversely proportional to the square of Earth day. This makes the square of the distance to the moon to be directly proportional to the square of Earth day. This implies that the distance to the moon remains proportional to Earth day. Hence R' / t' is a constant equal to 3.976120966 ($R' / t' = R \cos \theta / t'$). This makes the equation in the Quran **$c = 12000 L' / t'$ to be composed only of constants**, with no variables. Hence, **12000 Lunar Orbits/ Earth Day is a constant forever**.

As the moon acquires more energy from Earth's spin it does not actually speed up, instead it slows down because it orbits at a higher altitude (R' increases). This is also what happens when energy is transferred from stars to their orbiting planets, they slow down and recede.

4.5 billion years ago the moon formed when a planet collided with Earth. On impact, Earth gained angular momentum (rotational speed). This angular momentum has been slowly transferring to the lunar orbit. On impact of that planet with Earth, the molten debris recoiled with a certain escape velocity and sucked vaporized water and some gases from Earth's atmosphere. This debris clustered to form the moon. But the moon couldn't maintain those gases because its gravity was extremely weak and it didn't have a magnetic shield; so it lost those gases and settled in orbit without this mass.

The equation in the Quran **$c = 12000 \text{ Lunar Orbits/ Earth Day}$** has been true in the isolated system ever since the moon first lost this mass, that is, since the early creation of the Earth-moon; is true today and as the moon continues to recede this equation in the Quran will always be true.

To learn why there are two tidal bulges, one facing the moon and another one opposite to it, see footnote [\[4\]](#).

⊕ Variable Speed of Light:

$12000 \text{ Lunar Orbits/ Earth Day} = 299,792.458 \text{ km/s}$ is the speed of light for observers standing outside gravitational fields and looking at light also traveling outside gravitational fields. But an observer near a black hole for example sees the speed of light outside gravitational fields a zillion km/s. **This is because the velocity of light appears to vary with the intensity of the gravitational field** (See proof at footnote [\[5\]](#)).

According to the theory of General Relativity an observer standing outside gravitational fields looks at events inside gravitational fields and sees them in slow motion. When he steps inside those gravitational fields he sees them in normal speeds. But now he looks back at where he was outside gravitational fields and sees the events there in fast motion. In our case the event is the moon orbiting Earth. When an observer in stronger gravitational fields, near a black hole for example, looks at the Earth-moon system he does not see the moon orbiting Earth once every month; instead **he sees the moon orbiting Earth once every few seconds; he also sees the length of the lunar orbit to be much longer than we see it. This is because the gravitational field that he is in causes his clock to run slower and his ruler to shrink.**

Not only observers in different gravitational fields will not agree on the time period for the lunar orbit but also they will not agree on the length of the lunar orbit either. By using classical orbital mechanics we discovered that all observers will see the speed of light outside gravitational fields equal to **$12000 \text{ Lunar Orbits/Earth Day}$** ; but from General Relativity we know that they will never agree on a value in km/sec. An observer near a black hole for example sees the speed of light outside gravitational fields a zillion km/s, but still equal to **$12000 \text{ Lunar Orbits/Earth Day}$** ! This means that if the speed of angels outside gravitational fields were defined in **km/sec** then it would have appeared to vary for observers in different gravitational fields; however since this speed was defined in **Lunar Orbits/Earth Day** then it will never appear to vary to anyone because **$12000 \text{ Lunar Orbits/Earth Day}$** is common to all observers. **Hence outside gravitational fields this equation in the Quran is true for all observers forever.**

[\[Quran 10.5\]](#) **It is He (Allah) who made the sun to shine and the moon to light, and destined it in stages; that you may learn to count the years and the mathematics. Allah only created this in truth. He details His Signs for those who are knowledgeable (scientists).**

See how angels can reach anywhere in the universe before you finish reading this sentence:
[Wormholes](#) (Below)

(see the problem of Christians with the speed of light at footnote [\[7\]](#))

⊕ Time Dilation

For an object to move it needs to accelerate; but acceleration causes clocks to run slower, the stronger the acceleration the slower the clock.

The Quran states another verse in which angels traveling at a certain velocity, **appear to experience slower time than humans**. But this agrees with Einstein's theory of special relativity, which says that **a faster moving object appears to experience slower time**. Moslems use Einstein's theory of special relativity with the following verse in the Quran to assert that angels indeed accelerate up to the speed of light:

[\[Quran 70.4\]](#) **The angels and the Spirit ascend to Him in a day, the measure of which is fifty thousand years.**

Here angels will experience 1 day while humans will measure it as 50,000 years (time vs. time and not time vs. distance as the previous lunar verse). However, according to the theory of special relativity, given this time difference (time dilation), we can calculate the speed at which that object traveled. We can verify if those angels really accelerate up to the speed of light, as claimed by Moslems, or not. Outside gravitational fields it is:

$$\Delta t = \frac{\Delta t_0}{\sqrt{1 - \frac{v^2}{c^2}}}$$

(Where Δt_0 is the time measured for a mover by a mover; Δt is the time measured for a mover by a stationary frame; v is the velocity of the mover relative to the stationary observer):

Δt_0 is the time experienced by angels (1 day).

Δt is the time as measured by humans (50,000 lunar years x 12 lunar months/lunar year x 27.321661 days/lunar month).

v is the velocity of angels in this case (which we intend to calculate and then compare to the known speed of light).

c is the known speed of light **299792.458 km/s**, the speed of light in vacuum.

From the above equation we can solve for the unknown velocity:

$$\Rightarrow v = c \sqrt{1 - \frac{\Delta t_0^2}{\Delta t^2}}$$

So let's insert the Moslem claims and see if their angels really accelerate up to the speed of light or not. Insert dates from this verse 'The angels and the Spirit ascend to Him in a day, the measure of which is fifty thousand years' into the formula:

$$v = c \sqrt{1 - \frac{1^2}{(50000 \times 12 \times 27.321661)^2}}$$

$$v = c \times 0.99999999999999981$$

$$v = 299792.4579999994 \text{ km / s}$$

This time dilation (time difference) shows that angels indeed accelerate to relativistic speeds; outside gravitational fields this is the same speed calculated from the previous lunar verse also outside gravitational fields.

This time dilation could also occur when angels travel by [wormholes](#) (see how below).

Moslems ask how could an illiterate man who lived 1400 years ago have figured out Time Dilation and the core of Relativity?

[-Top-](#)

⊕ Gravitational Fields

Clocks run slower in stronger gravitational fields (near bigger mass).

Moslems believe that Paradise and Hell are both much bigger and much more massive than Earth (but still much smaller than God's Throne). **The theory of general relativity says that time should pass slower near an object more massive than Earth (clocks run slower in stronger gravitational fields).** So according to general relativity, time should pass in Paradise/Hell much slower than on Earth. Moslems say that this is what Allah says. **It is stated in the Quran that 1 day in Paradise/Hell measures a 1000 years on Earth:**

[\[Quran 22.47\]](#) They challenge you to bring forth that torture [in Hell] and Allah will not break His promise; a day of your Lord [Paradise/Hell promise] is like a thousand years of what you count.

Here God promises those who do not believe in Hell and punishment that each day of their torture in Hell will measure a thousand years on Earth. So according to the Quran, time passes faster on Earth than in Paradise/Hell. But this agrees with the theory of general relativity which says that time passes slower near bigger mass. Paradise and Hell are much more massive than Earth and time should pass there much slower than on Earth.

Christians believe that God created the universe in 6 **earthly** days and rested on the 7th. Moslems believe that **6 days passed at God's Throne** but we experienced **13.5 billion years on Earth:**

Moslems believe that God is not bound to His Throne; rather He created it and set it as a reference. The Quran says that God's Throne is even wider than the whole universe; so how about the mass of God's Throne? God's Throne is much more massive than Earth. Time should pass there much

slower than on Earth. The theory of general relativity explains why time passes slower at God's Throne than on Earth. General relativity explains why 6 days passed at God's Throne but we measured it as 13.5 billion years (that is each day at God's Throne measures around 2.25 billion years on Earth).

Science says that the Earth is 4.5 billion years old and that the universe is 13.5 billion years old. This places the age of Earth at one third the age of the universe. Moslems say that this is what Allah says. The Quran says that God counted 6 days since the creation of the universe but God only counted 2 days since the creation of Earth:

[\[Quran 50.38\]](#) We [Allah] created the **heavens and the Earth and all what's between them in six days**, and We were not touched by fatigue.

[\[Quran 41.9\]](#) Say: "Is it that you deny Him [Allah] who **created the Earth in two days**? And you claim others to be equal to Him? He is the Lord of (all) the Worlds."

So far, God counted 2 days for Earth and 6 days for the whole universe. The Quran clearly states that the age of Earth is one third the age of the universe [\[6\]](#). ***Moslems ask how could an illiterate man who lived 1400 years ago have figured out the age of Earth relative to the age of the universe?***

(The Christian Bible puts the creation of Earth on day one; making the age of Earth equal to the age of the universe)

So according to the Quran:

God's Throne > Paradise/Hell > Earth

The smaller the mass, the faster the time

Moslems ask how could an illiterate man who lived 1400 years ago have figured out that time passes slower near bigger mass?

[-Top-](#)

⊕Pulsars and Black Holes

General relativity predicted the formation of black holes from neutron stars. As more matter falls into a neutron star its mass increases; and as its mass increases its gravity increases. A point will be reached where gravity would have grown so much that not even light could escape, thus a black hole forms.

Most neutron stars discovered today are in the form of radio pulsars. Radio pulsars are neutron stars that emit radio waves. We can simply connect a radio telescope to a loud speaker and hear a pulsar.

Pulsars sound like someone persistently knocking. Click here and listen to a [slow knocking pulsar](#). Click here and listen to a [fast knocking pulsar](#).

So in short, we can hear a pulsar knock; and if matter continues to fall into this pulsar a black hole will eventually form. Moslems say that this is what Allah says. The Quran describes a star by "The one who knocks" and says that it is "The one who makes a hole".

[\[Quran 86.1-3\]](#) And the heaven and the "**Knocker**" (**Tarek** in Arabic) ² How could you know about the "Knocker"? ³ The **piercing** star (**Thakeb** in Arabic).

The Arabic word "Thukb" means hole; "**Thakeb**" means the one who makes the hole. The Quran is describing a knocking star that makes a hole.

Moslems ask how could an illiterate man who lived 1400 years ago have figured out Pulsars and Black Holes?

[\[Quran 26.2-6\]](#) These are the verses of a clarifying Book. ³ You might be frustrated that they don't believe; ⁴ If We wish, We hand down from the heaven a sign (proof); their necks to it remain subdued. ⁵ And every new revelation they were given from The Most Gracious (Allah) they dismissed. ⁶ They disbelieved (the Quran), so they will receive the news of what they have been mocking.

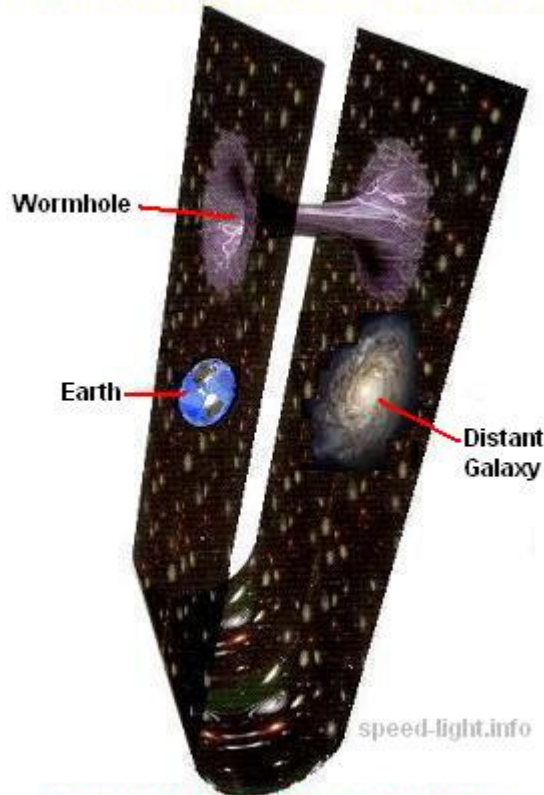
[-Top-](#)

⊕ Wormholes (Length Contraction)

Look up to the night sky and select a star as a destination. Can any human reach this star by just walking few steps?

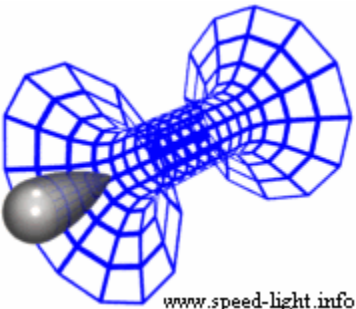
General relativity explained a mechanism to contract this huge distance into few meters. Albert Einstein called this mechanism 'bridges' in space-time. Today, scientists call them wormholes. A wormhole would act as a shortcut connecting two distant regions in the universe.

Wormholes act like shortcuts
between distant points in space



Wormholes are equivalent to
folding spacetime like a book

A wormhole contracts the distance between two doorways placed separately anywhere in the universe. Example, consider a galaxy 100 million light years away. When you look today from Earth to that galaxy, you will not see it as it is today, but rather as it was 100 million years ago. This is because light took 100 million years to travel all that distance. But if you take a journey inside a wormhole from Earth to that galaxy, you would reach that galaxy today. So when you reach it today, you will see it as it is today, not as it was 100 million years ago. So if you use a wormhole, events at that galaxy (your destination) would appear as if in fast forward (from 100 million years ago till today).



When you reach that galaxy today and look back at Earth, you would not see Earth as it is today; instead you would see Earth as it was 100 million years ago (you would see the dinosaurs). This is because light took 100 million years to reach there. So as you use a wormhole, events at Earth (your departure) would appear as if in fast rewind (from today till 100 million years ago).

On the return journey, events on Earth (destination) would appear as if in fast forward (from 100 million years ago till today); while the events at that galaxy (departure) would appear as if in fast rewind (from today till 100 million years ago). **This is not time travel; this is just a consequence of the length contraction inside a wormhole.**

Scientists know how a wormhole works but have never actually used one. Do you remember how a frictionless roller coaster works? That is, you start high and slow then you go down and fast but when you come back up again to the previous height you return to your previous slow speed? Well, the

wormhole is the most efficient roller coaster you can imagine. **Energy is not required to move through the wormhole**, that is, you can simply switch off your rockets. Gravity accelerates you and pulls you through and then expels you the other side. You will feel like being swept by waves at the beach and nothing more.

On your way through, gravity causes your clock to run slower and your ruler to shrink. Distant observers see you accelerating to relativistic speeds; as a result, your energy (and mass) increase dramatically in their view; but when you get out the other side everything returns back to normal (your clock, ruler...).

Allah gave this method of transportation to his angels throughout the universe. The Quran calls them 'Maarej' and describes how angels use them for long distance travel. Today Moslems know that these 'Maarej' is what scientists call wormholes:

[\[Quran 70.1-4\]](#) Someone asked about the penalty that will befall ² the unbelievers; (A penalty) that has none to ward off; ³ (a penalty) from Allah (who owns) wormholes [**Maarej** in Arabic] ⁴ The angels and the Spirit ascend to Him in a day, the measure of which is fifty thousand years.

Any object passing through this wormhole will also experience this same time dilation (one day inside wormhole vs. 50,000 years on Earth) and not just those angels. **This time dilation does not say how long it takes you to cross the wormhole, it just says that when you pass through the wormhole you age by this ratio.**

God says that those wormholes are doors in the heaven that contract interstellar distances into walking distances; the resulting scenery is bizarre: God says that those who do not believe in the message will not believe it even if He showed them a bigger sign. He created beautiful towering structures in the heavens. If He opens for those nonbelievers a door in heaven and lets them continue passing through it to those distant structures, they would not believe that they really got there by simply walking few steps. Instead they would think that they are just optical illusions:

[\[Quran 15.13-16\]](#) They do not believe the Message, like those who preceded them; ¹⁴ Even if We [Allah] opened upon them from the heaven a door and they continued passing through it ¹⁵ they would say 'Our sight is bedazzled, rather we have been bewitched' ¹⁶ It is We [Allah] who have made towering structures in the heavens and made them beautiful for beholders. ¹⁷ And We protected them from every evil spirit accursed.

Here, they wouldn't believe their own eyes thinking that what they see is not real. They wouldn't believe that they got to those heavenly structures by simply walking few steps. But God insists that what they see is real and not illusions (that is, they really got there).

The Quran says that those heavenly doors are galactic shortcuts to distant places in the universe. Angels guard those heavenly doors '**from every evil spirit accursed**'. Moslems believe that angels use these doors for long distance travel. Angels can accelerate up to the speed of light for domestic travel; but they use these wormholes to reach any place in the universe before you finish reading this sentence.

Moslems also believe that wormholes are not strictly for the use of angels. Their prophet used a wormhole once in the 'Israa & Meraaj' (Meraaj is singular of Maarej) ([Quran 17.1](#)).



See: The Quran describes the doorways of a wormhole like two shells, exactly like modern science: [Islam & Life on other Planets.](#)

[\[Quran 34.6\]](#) And those who have received knowledge (scientists) will see that what have been sent down to you from your Lord (the Quran) is the Truth, and that it guides to the Path of the Exalted, Worthy of all praise.

Moslems ask how could an illiterate man who lived 1400 years ago have figured out Length Contraction and Wormholes?

[-Top-](#)

⊕ Dark Matter and Gravitational Lensing

Scientists have just confirmed the existence of **Dark Matter**. This mysterious Dark Matter provides the bulk of gravity that holds galaxies (not the regular matter that forms stars and planets). This Dark Matter has weird collision properties (collisionless). Simply put: we cannot see Dark Matter nor collide with it but we can detect its gravity.

According to the Quran, we cannot see nor collide with Jinn but they have weight:

[\[Quran 55.31\]](#) We [Allah] will settle your affair, both you of weight (man and jinn)

The Jinn have weight means that we can detect their gravity and they can detect our gravity. So according to the Quran we cannot see the Jinn nor collide with them but we can detect their gravity.

Just as the Jinn is of different type that we cannot see nor collide with but we can detect their gravity, there are six other Heavens that we cannot see nor collide with either but we can detect their gravity, superimposed above the visible one:

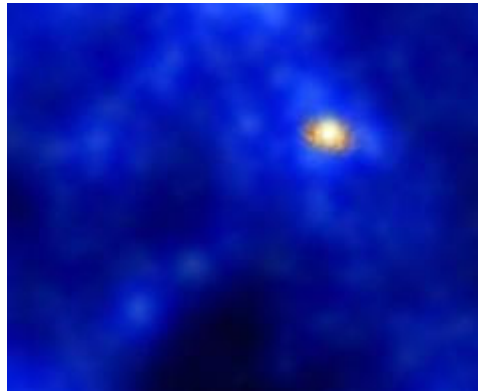
[\[Quran 41.12\]](#) So [Allah] decreed them as seven heavens (one above the other) in two days and revealed to each heaven its orders. And We [Allah] adorned the **lowest heaven with lights**, and protection. Such is the decree of the Exalted; the Knowledgeable.

According to the Quran, only the lowest heaven has visible light. This means that this Dark Matter exists in the six Heavens superimposed above the lowest one. Also according to the Quran, each of these remaining six Heavens is of a different type and each has its own planets like Earth:

[\[Quran 65.12\]](#) Allah is the one who created seven Heavens and from Earth like them (of corresponding type); [Allah's] command descends among them so that you may know that Allah is capable of anything and that Allah knows everything.

Earth is not a unique planet in Islam. Other planets like Earth do exist throughout the other six Heavens. It is just that we cannot see them nor collide with them but we can detect their gravity.

General relativity predicted gravitational lensing, that is, the gravitational field generated by a galaxy causes the light passing through it to bend (change direction). Since this Dark Matter does not emit any light, scientists can only map its location by using gravitational lensing, that is, by detecting where light is bending in places where it shouldn't. In this image a single galaxy emits light that gets bent by dozens of invisible dark matter galaxies:



Moslems say that this is how God challenges nonbelievers to detect the remaining six superimposed Heavens:

[\[Quran 67.3-4\]](#) [Allah] is the one who created seven superimposed Heavens. You do not see variations in the formations of the Compassionate, so redirect your sight, do you see any creation? ⁴ Then redirect your sight again, your vision returns to you in defeat and regret.

Today they looked again and found those creations indeed.

Moslems ask how could an illiterate man who lived 1400 years ago have known about Dark Matter and Gravitational Lensing?

[-Top-](#)

⊕ Dark Energy, Redshifting and Expanding Universe

Science says that the universe was created in a Big Bang 13.5 billion years ago, is still expanding today, and billions of years from now it might collapse by its own gravity with a Big Crunch. Moslems say that this is what Allah says. The Quran says that on the first day of creation, God made the heavens and the Earth meshed together, tight and compact (Big Bang), continues to expand it into the universe we know today and at the last day God will recompress it into it's original state (Big Crunch).

About the first day (Big Bang), Allah says:

[\[Quran 21.30\]](#) Do not those who disbelieve see that the heavens and the Earth were meshed together then We tore them apart? And then We made of water everything living? Would they still not believe?

About the expanding universe, Moslems say that Allah told them about this expansion 1400 years before it was discovered:

[\[Quran 51.47\]](#) And the heaven, We built it with craftsmanship and We are still expanding.

Scientists just confirmed the existence of "Dark Energy", a mysterious repulsive force that acts in opposite to gravity. As the distance increases the attractive gravitational force decreases but this mysterious repulsive force increases. This repulsive force is pushing galaxies apart; the greater the distance the greater the repulsion. Scientists today do not know what this "Dark Energy" is, but they know that it is causing the entire universe to expand at an increasing rate. Do you remember how a rose opens up? That is, the outer petals move outwards more than the inner petals?



Imagine that those petals have galaxies on them and that we are at the center. Now imagine this rose opening up; the farther out the petals are the faster their recession away from the center (where we are). Well this is exactly how the universe expands around us; the farther out galaxies are from us the faster their recession away from us.

[\[Quran 55.37\]](#) If the heavens tore open like a colorful rose...

Here God assures skeptics about Paradise: if the heaven tore open like this then Paradise will as surely contain so and so...

Today we know for sure that this is how galaxies are rushing away from us from redshifting of their light: The more distant galaxies are the more reddish their light appears to us (the stronger their red means the faster they are receding away from us). This is true for any observer anywhere in the universe not just for observers in the center where the Big Bang occurred.

About the last day (Big Crunch), Allah promises:

[\[Quran 21.104\]](#) On the day when We will fold the heaven, like the folder compacts the books, and as We originated the first creation We shall return it; a promise (binding on Us); surely We will deliver.

Here God promises to make this Big Crunch not by gravity but rather by folding the Heavens like a book, that is, by the same mechanism He controls wormholes. This means that this Big Crunch can begin and end in a fraction of a second!

You might question how could this Big Crunch happen in just a fraction of a second. Wouldn't that be faster than light? Isn't that a contradiction with special relativity which says that nothing can go faster than the speed of light? Well yes it is faster than the speed of light, but the Big Bang itself turned out to be faster than the speed of light! The Big Bang started from a cosmic singularity and then expanded much faster than speed of light. During the Big Bang, a process called **"INFLATION"** occurred. A fraction of a second (10^{-38} sec) after the cosmic singularity was created inflation started. During inflation, the size of our observable universe increased from an initial size smaller than the size of an atomic nucleus (10^{-23} millimeters in diameter) to approximately the size of our galaxy (one hundred thousand light years across). The duration of this inflation was only a fraction of a second (10^{-35} sec). So the Big Bang itself was faster than the speed of light. This is not a contradiction with special relativity because **spacetime itself expanded**. In God's promise of the Big Crunch **spacetime itself will contract**.

After this Big Crunch is over the entire universe would be squeezed into a space smaller than the size of an atomic nucleus; just as it all started in the Big Bang.

Also after this Big Crunch is over, God promises to recreate those heavens and Earth once more before Judgment Day:

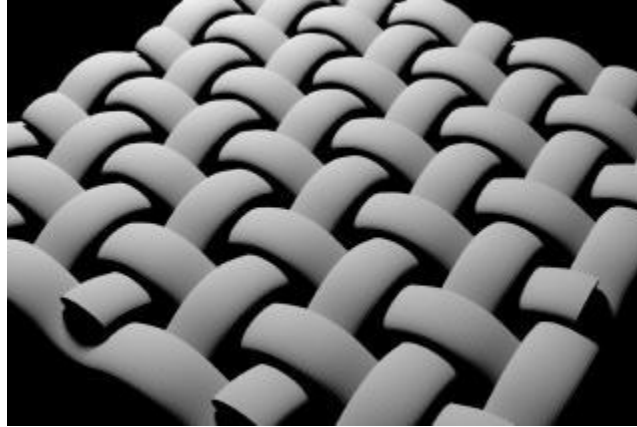
[\[Quran 14.48\]](#) On the day when Earth will be swapped by another Earth and so will be the heavens; and all (creatures) will resurrect before the One Dominant God.

[\[Quran 36.81\]](#) Is He not, who created the heavens and the Earth, capable of creating others like them? ⁸² Yes, indeed! He is the All-Knowing Creator. ⁸³ His command, if He wanted a thing, is that He only says to it, "BE" and it becomes! So glorified is He in whose hands is the dominion of all things, and to Him you shall be returned.

Moslems ask how could an illiterate man who lived 1400 years ago have known about Redshifting and Expanding Universe? How could he have known about Dark Matter and Gravitational Lensing? How could he have figured out Length Contraction and Wormholes? How could he have known about Pulsars and Black Holes? How could he have known that time passes slower near bigger mass? How could he have figured out that faster objects experience slower time? How could he have figured out the speed of light?

⊕ Celestial Motion

An observer on Earth sees the path of the moon as circular around Earth, right? But due to the motion of the Earth-moon system around the sun, distant observers would see the path of the moon as a sine wave around the sun. Do you remember how fabric is woven? That is if you trace a thread it would make a sine wave?



This is exactly how distant observers would see the path of moons around planets around stars and the path of planets around stars around...

[\[Quran 51.7\]](#) And the heaven that has paths of weaves (**Hubuk** in Arabic).

Here God swears by the Heaven that has celestial paths that make weaves. (**Hubuk** is plural of **Habka** which means a weave).

As the massive celestial bodies move in space, their gravity sucks in the small debris of rocks and gas. Do you know how to sweep the ground? Well this is how planets and stars sweep their paths.

[\[Quran 81.15-16\]](#) So I [Allah] shall swear by the planets that recede, ¹⁶ that move, that sweep (**Kunnas** in Arabic).

"Miknasa" in Arabic means a sweeping brush. "Kannasa" is the past tense of sweep. "**Kunnas**" means those who sweep. God swears by the planets that move and sweep.

[-Top-](#)

⊕ Ice in Comets

Water on Earth actually came from outer space, particularly from ice in comets. When those comets enter our atmosphere, the heat generated on entry vaporizes this ice into the atmosphere. Moslems say that this is what Allah says. God says that there are mountains in heaven that have ice inside them. Those mountains could fall on Earth making a very bright flash.

[\[Quran 24.43\]](#) Can't you see that Allah makes the clouds move gently, then joins them together, then makes them into a pile? Then you see rain come out from within? **And He [Allah] sends down from heaven mountains with ice inside them; that strike whomever He wishes or miss whoever He wishes; Its' flash almost blinds you.**

[-Top-](#)

⊕ Rotation of Earth Slowing Down

Earth is a sphere. Moslems say that this is what Allah says. The Quran says that when the night and the day overlap, they make a ball (sphere):

[\[Quran 39.5\]](#) [Allah] Created the heavens and the Earth in truth. **He overlaps [Yukawer in Arabic] the night over the day and overlaps [Yukawer] the day over the night**, and enslaved the sun and the moon. Everything moves to a prerecorded destiny [on the Preserved Tablet]. Is He not the Exalted, the Forgiver?

The Arabic word "Kura" means ball; its verb "**Yukawer**" means: **to make into a ball**. The Quran says that the overlapping of the night and the day makes a sphere (ball).

Science says that the rotation of Earth is slowing down, that is, days are getting longer. Moslems say that this is what Allah says. The Quran says that Allah persistently asks more of the day and more of the night, that is, for the day to get longer:

[\[Quran 7.54\]](#) And your Lord, Allah, who created the Heavens and the Earth in six days and then settled on the Throne (as reference). **[Allah] Covers the night with the day, asks for it persistently**; and the sun and the moon and the stars enslaved by His orders. Is this not His creation and His command? Blessed be Allah the Lord of all the worlds.

[-Top-](#)

⊕ Tectonics

Earth's crust has been slowly moving for billions of years. Not only mountains are still slowly moving but also whole continents. Moslems say that this is what Allah says:

[\[Quran 27.88\]](#) You see the mountains and think they are firmly fixed: but they are moving away just like the clouds are moving away: (such is) the artistry of Allah, Who disposes of all things in perfect order: for He knows all what you do.

[-Top-](#)

⊕ Atmospheric Pressure

Atmospheric pressure decreases with altitude; The higher the altitude the more difficult breathing becomes. Moslems say that this is what Allah says. The Quran says that as we ascend to the sky it becomes more difficult for us to breath:

[\[Quran 6.125\]](#) Those whom Allah wants to guide, He opens their chests to Islam; And those whom He wants to leave astray, He makes their chests tight and constricted, as if they are ascending to the sky: Such is the penalty of Allah on those who refuse to believe.

Moslems ask where did this come from? How could an illiterate man who lived 1400 years ago have figured out that the stars were born from heated gas and dust if he never had a telescope? How could he have described the early stages of the embryonic development of a fetus if he never had a microscope? How could he have located the lowest geographical point on Earth if he never had a GPS? How could he have identified which part of the human brain is responsible for motivation, planning and moral judgment if modern science only determined that in the past few years with the most sophisticated equipment ever?

Moslems ask if their prophet were not sent by God then where did this come from?

[\[Quran 41.53\]](#) We (Allah) will show them Our signs in the universe, and in their souls, until it becomes clear to them that It (the Quran) is the truth. Is it not enough (for nonbelievers) that your Lord witnesses over all things?

[-Top-](#)

[\[1\]](#) It is the angels who execute Gods orders:

[\[Quran 79.5\]](#) Execute orders (**Mudaberat Amran** in Arabic)

"**Mudaberat**" in Arabic means execute and "**Amr**" means order. These exact two words are also used in describing the rate at which God's orders are executed:

[\[Quran 32.5\]](#) (Allah) Rules the cosmic affair (**Yudaber Al-Amr** in Arabic) from the heavens to the Earth. Then this affair travels to Him a distance in one day, at a measure of one thousand years of what you count.

Also, the Arabic word "**Araj**" means a man with a lame leg. "**Yaruj**" means a man stepping. The Quran is describing the speed at which God's orders (**Amr**) are carried out and literally says that it is "at a measure (**Mekdar**) of one thousand years of what you count". Those people back then followed the lunar calendar and counted 12 lunar months each year. Since this verse is emphasizing steps and since stepping has two quantitative attributes: time and distance, then the first part of this verse is describing time and the second part is describing distance. So the orders are carried out in that time and that distance.

About the Preserved Tablet:

[Quran 85.21-22] But it is a Glorious Quran. 22 Inscribed on a Preserved Tablet.

Moslems believe that Archangel Gabriel got the Quran to their prophet from this Preserved Tablet:

[Quran 15.8-11] We only send down the angels in Truth; if they were not (in truth), no respite would they have⁹ We have sent down the Message; and We will preserve it¹⁰ We did send Messengers before you among the religious sects of the old¹¹ But never came a Messenger to them but they mocked him.

The Quran and all the instructions to all angels were inscribed on this Preserved Tablet before the creation of Earth started. They commute to and from this Tablet to get their orders from God. The angels were originally made of light, and the speed at which they commute to and from this Tablet turned out to be the known speed of light.

[2] In isolated systems all external forces are screened out. This reveals the intrinsic characteristics, relations and capabilities of the system, that is, what the Earth-moon system can do on its own without any external forces.

Sun's gravitational field along with Earth's motion around the sun produce a net rotational force on the lunar orbit (like torque around Earth). Without this gravitational twist the moon's isolated orbital length would only be $L' = L \cos \theta$. This is because the total energy of the lunar orbit (kinetic + potential) is the vectorial sum of the energy acquired from Earth's spin plus the energy acquired from this force.

For the Earth-moon system to be outside gravitational fields then the distance to the sun has to increase to infinity. And as the distance to the sun increases to infinity the lunar orbit loses this twist; but this also means that the moon would no longer have enough kinetic energy to stay long at the compounded radius R and isolated velocity $V' = V \cos \theta$ (too high too slow), instead it starts a spiral descent to the isolated radius $R' = R \cos \theta$ and accelerates to a final velocity of

$$V'_{\text{Final}} = \sqrt{\frac{GM_{\text{Earth}}}{R \cos \theta}} = \frac{V}{\sqrt{\cos \theta}}$$

The ratio of the orbital binding energies (the ratio of the work required to move the moon against gravity to infinity) is:

$$\begin{aligned} \frac{W_{R \rightarrow \infty}}{W_{R' \rightarrow \infty}} &= \frac{-(EK(R) + EP(R))}{-(EK(R') + EP(R'))} = \frac{\frac{1}{2} m_{\text{moon}} V^2 - \frac{Gm_{\text{moon}} M_{\text{earth}}}{R}}{\frac{1}{2} m_{\text{moon}} \frac{V^2}{\cos^2 \theta} - \frac{Gm_{\text{moon}} M_{\text{earth}}}{R \cos \theta}} \\ &= \frac{\frac{1}{2} m \frac{GM}{R} - \frac{GmM}{R}}{\frac{1}{2} m \frac{GM}{R \cos^2 \theta} - \frac{GmM}{R \cos \theta}} = \frac{-\frac{GmM}{2R}}{-\frac{GmM}{2R \cos \theta}} = \cos \theta \end{aligned}$$

This means that without the energy gained from this twist the orbital radius decreases to $R' = R \cos \theta$.

Hence the length of the lunar orbit becomes $L' = 2\pi R' = 2\pi R \cos \theta = L \cos \theta$ (i.e. 12000 $L' / t' = 12000 L \cos \theta / t'$) and the orbital period decreases.

Simply put: Outside the gravitational field of the sun all observers will see the speed of light equal to 12000 Lunar Orbits/ Earth Day.

An observer on Earth sees this force as rotational around Earth, however an observer on the sun sees this same force as radial towards the sun (not towards Earth). But no matter from where observers are looking they will all see this same force doing the same work.

The energy for this isolated velocity V' came from a reaction force from Earth (see [ocean friction](#) above) and not from sun's gravitational force. As the moon acquires more energy from Earth's spin it does not actually speed up, instead it slows down because it orbits at a higher altitude (R' increases); the orbital period increases and the length of the lunar orbit increases. As R' reaches R , the isolated lunar orbit would have acquired the same radius and velocity as the one achieved with the assistance of the sun ($R' = R$ & $V' = V$) but with a slower rotating Earth.

Today's lunar orbit is a very low eccentricity ellipse (very close to a perfect circle) but when the moon first formed it was a very high eccentricity ellipse (high deviation from a perfect circle). The eccentric ellipse back then had a point very close to Earth and another point very far out. When the moon was nearest to Earth the gravitational forces were stronger and hence more energy was transferred to the moon when it was closer to Earth than when the moon was farther out inside the ellipse. This made the moon recede more when it was closer to Earth than when it was farther out inside the ellipse. This difference in recession rates smoothed out the differences between the closest and the farthest points in the orbit. This is why today's orbit is very close to a perfect circle.

The nearest and farthest points in the orbit give us the average distance to the moon; but since Earth lies on the major axis of the ellipse then the average distance to the moon is just the semi-major axis. Geometrically, the radius of the equivalent circle should be the average of semi-major and semi-minor axes; but since the direction of the axes change with respect to stars then when the moon returns to the same position with respect to stars this does not mean that it made an exact ellipse. When astronomers study the energy of our moon and also the energy of moons orbiting other planets they use the equivalent circle method with the sidereal system, that is, the moon has to return to the same position with respect to stars and not return to the same position relative to the ellipse.

[3] We can calculate \varnothing from the period of one heliocentric revolution of the Earth-moon system (365.2421987 days):

$$\varnothing = 27.32166088 \text{ days} \times 360 \text{ degrees} / 365.2421987 \text{ days} = 26.92952225 \text{ degrees}$$

[4] Consider a spherical mass of weakly-interacting particles (say a gas) and a spherical gravitational source (say the moon). The gravitational force is stronger on the particles of gas closer to the moon than on the particles farther out. The difference in forces makes the sphere of gas to be stretched into an ellipsoid. (General relativity explains why the actual tidal effect generated by a spherical gravitational source is stretching in the direction of the freefall and additional squeezing in the transverse direction). In our case the moon stretches the oceans into an ellipsoid while Earth is too rigid to change shape; so we end up with two tidal bulges one facing the moon and another one opposite to it. This is why we have two high tides a day instead of one.

[5] Recalling the very famous second postulate of **Special Relativity** declared by Einstein (1905): "**The velocity c of light in vacuum is the same in all inertial frames of reference in all directions and depend neither on the velocity of the source nor on the velocity of the observer**". Einstein's theory of special relativity says that the speed of light in vacuum is always the same (at 299,792.458 km/s) but this is true only for systems that are **inertial**, which means **not accelerating**. From Newton's second law: if forces exist implies acceleration exists; this means that special relativity is valid only when **no**

forces are acting; thus it cannot be used when there is a gravitational force present. Albert Einstein himself emphasized this in his paper written in 1917: "**The results of the special relativity hold only so long as we are able to disregard the influence of gravitational fields on the phenomena**". Therefore for the results of special relativity to hold the systems should not be accelerating (no gravitational forces).

In 1915 (10 years after special relativity) Einstein developed another theory called **General Relativity** that deals with gravitational fields and according to this latest theory the velocity of light appears to vary with the intensity of the gravitational field. For example, an observer outside gravitational fields measures the speed of light locally (in his location) at 299792.458 km/s but when he looks towards a black hole he sees the speed of light there to be as slow as a few km/s. At the same time an observer **freefalling** into that black hole (**zero-g**) measures the speed of light locally (in his location) at 299792.458 km/s; when he looks towards the black hole he sees the speed of light there much slower; when he looks away from the black hole he sees the speed of light there much faster. If he tries to resist his freefall into that black hole (by firing his rockets for example) he will not measure the speed of light locally anymore at 299792.458 km/s; instead the stronger the g-force that he feels the faster light appears to him. Again when he looks towards the black hole he sees the speed of light there much slower; when he looks away from the black hole he sees the speed of light there much faster. In any case, freefalling or not, he will never see the speed of light outside gravitational fields at 299792.458 km/s. Finally, there is no difference between the effects of g-forces experienced from these rockets and the effects of g-forces experienced when standing on planets, stars... hence an observer standing on a black hole measures the speed of light locally (in his location) much faster than 299792.458 km/s; when he looks towards outside gravitational fields he sees the speed of light there a zillion km/s.

To see the steps how Einstein theorized that the speed of light in a gravitational field is actually not a constant, but rather a variable depending upon the reference frame of the observer:

'On the Influence of Gravitation on the Propagation of Light', Annalen der Physik, 35, 1911.

Einstein wrote this paper in 1911 in German (download from: http://www.physik.uni-augsburg.de/annalen/history/papers/1911_35_898-908.pdf). It predated the full formal development of general relativity by about four years. You can find an English translation of this paper in the Dover book 'The Principle of Relativity' beginning on page 99; you will find in section 3 of that paper Einstein's derivation of the **variable speed of light** in a gravitational potential, eqn (3). The result is:

$$c' = c_0 \left(1 + \frac{\Phi}{c^2} \right)$$

Where Φ is the gravitational potential relative to the point where the speed of light c_0 is measured. Simply put: Light appears to travel slower in stronger gravitational fields (near bigger mass).

You can find a more sophisticated derivation later by Einstein (1955) from the full theory of general relativity in the weak field approximation:

'The Meaning of Relativity', A. Einstein, Princeton University Press (1955).

See pages 92-93, eqn (107); the variable velocity of light expressed in co-ordinates is:

$$\frac{\sqrt{dx_1^2 + dx_2^2 + dx_3^2}}{dt} = 1 - \frac{\kappa}{4\pi} \int \frac{\sigma dV_0}{r}$$

Simply put: Light appears to travel slower near bigger mass (in stronger gravitational fields). A non-mathematical discussion of this can be found in:

'The Riddle of Gravitation', Peter G. Bergmann, Charles Scribner's Sons, NY (1987).

See pages 65-66. Bergmann takes the deflection of light by the gravitational field of a star as evidence of the decreased speed of light in a gravitational field.

You can also find modern direct derivations that lead to the same results by Einstein in 1911:

'Relativity, Gravitation, and Cosmology', T. Cheng, Oxford University Press (2005).

See pages 48-49, eqn (3.39):

$$c(r) \equiv \frac{dr}{dt} = \left(1 + \frac{\Phi(r)}{c^2}\right) \frac{dr}{d\tau} = \left(1 + \frac{\Phi(r)}{c^2}\right) c$$

In conclusion, the velocity of light in a gravitational field is not a constant, but rather a variable depending upon the reference frame of the observer; what one observer sees as true another observer sees as false. The only observers that can actually agree that the speed of light outside gravitational fields is 299792.458 km/s are those who are themselves outside gravitational fields.

[6] Moslems believe that God sustains all living things. And all His commands to the angels to sustain man and animals were inscribed on the Preserved Tablet. The Quran says that not even a leaf would drop on Earth without it being previously recorded in this Preserved Tablet.

God says that He inscribed this Preserved Tablet before the creation of Earth started. The Quran says that God answered our prayers today (as commands for the angels on the Preserved Tablet) during the first four days when Earth was still smoke. After this God ordered Earth to form:

[Quran 41.9-12] Say: "Is it that you deny Him [Allah] who created the Earth in two days? And you claim others to be equal to Him? He is the Lord of (all) the Worlds." ¹⁰ He set on it (Earth) mountains, and bestowed it with blessings. **And [Allah] estimated all its sustenance in four days, equally for those who ask (prayers)** ¹¹ **AFTER THIS (Thumma** in Arabic) [Allah] commanded the heaven and it was still smoke. He said to it and to Earth: "Come together, willingly or unwillingly." They said: "We do come together, in willing obedience". ¹² So [Allah] decreed them as seven heavens (one above the other) in two days and revealed to each heaven its orders. And We [Allah] adorned the lowest heaven with lights, and protection. Such is the decree of the Exalted; the Knowledgeable.

God answered our prayers today when Earth was still smoke (the first four days). After this (**Thumma**) God ordered Earth to form. The formation of Earth took two days. **So our prayers today are already answered on the Preserved Tablet since before the formation of Earth started.**

Also in the last two days, God created seven heavens, one above the other, but we can only see the lights of the lowest one. The six Heavens superimposed above the lowest one with visible light contain the elusive **Dark Matter**.

[7] The Christian Bible says that the universe was created less than ten thousand years ago. Science says that the universe was created 13.5 billion years ago. We can actually observe galaxies 13 billion

light years away; that is, light already traveled 13 billion years before it reached us. This alone proves their Bible wrong. To fix this problem, they need the speed of light to decay (to slow down over time); that is, light was faster and covered that distance in much shorter time. But the theory of relativity says that the speed of light is constant over time (no decay)... Since the theory of relativity contradicts their Bible, ***they need the theory of relativity to be wrong for their Bible to be correct.***

Some Christians claim that [Quran 32.5](#) (angels travel in one day the same distance that the moon travels in a 1000 lunar years) is a restatement of this Bible verse:

[\(2Peter 3:8\)](#) But do not forget this one thing, dear friends: **With the Lord a day is like a thousand years, AND A THOUSAND YEARS ARE LIKE A DAY.** ⁹ The Lord is not slow in keeping his promise, as some understand slowness. He is patient with you, not wanting anyone to perish, but everyone to come to repentance.

Obviously this verse is talking about God's patience, but some Christians say that it predated the scientific miracles of the Quran.

The first problem with this Christian claim is that the Quran is referring to the angels moving and not God moving. Here in this Bible verse God has to be moving. And assuming that God is moving, not only this verse does not talk about any distance traveled but also Christians and the Jews before them used solar years. The Jews used to add a 13th lunar month every few years to make up for the difference between the lunar and the solar year. The calculations based on their standards fails to reveal the speed of light.

Second problem, this verse describes time vs. time (and not time vs. distance). So if this time difference (time dilation) is due to the mass of God's Throne then the Bible got it wrong as well: 1 day at God's Throne should measure 2.25 billion years on Earth; instead the Bible says "**With the Lord a day is like a thousand years**". Here the bible missed by a whole 2,250,000,000 years! The other part says "**AND A THOUSAND YEARS ARE LIKE A DAY**", that is, 1000 years by God measures 1 day on Earth. Here the Bible got it in reverse! So how small is God's Throne? Even if God's Throne is microscopic, Earth is not massive enough to generate this time dilation.

Third problem, if this verse was referring to time dilation due to God's movement then it got it all wrong as well. For an object to move it needs to accelerate. But acceleration causes clocks to run slower, the stronger the acceleration the slower the clock; hence the faster moving object experiences slower time and not the other way round. In this verse in the Bible it is man who experiences the slower time hence travels faster than God! Man experiences less time of 1 day (travels fast) and God experiences more time of 1000 years (travels slow). This verse practically says that once God travels faster than man but immediately follows it with a fatal mistake that man travels faster than God. So no, the Bible got it wrong in every possible way.

But the Bible did indeed describe sunlight: Common sense says that sunlight illuminates Earth and that without sunlight darkness will cover the Earth. Is there anything simpler? But the Bible says something else: In [Genesis 1:1-31](#), the Bible explains how the sun is related to day and night. The Bible says that on the first day God created the light and darkness on Earth. The first evening came and the first morning followed. But God did not create the sun until the fourth day, specifically after three evenings and three mornings. So three evenings and the three mornings occurred on Earth before there was a sun. So according to the Bible daylight occurs without the sun!

The Bible also described genetics: While today's scientists have confirmed that animals inherit their colors and stripes from their parents (through DNA), the Bible says something else: In [Genesis 30:37-42](#), the Bible explains how baby goats get their streaked colors: If their parents were mating **AND**

LOOKING at upright rods then the baby goats will have stripes; while if their parents were mating **BUT NOT LOOKING** at upright rods then the baby goats will not have stripes!

[\[Quran 2.23-24\]](#) And if you were in doubt about what We have revealed to Our servant, then bring forth a book like the Quran; and call your witnesses (scientists) to prove it contrary to Allah, if you were truthful. ²⁴ But you cannot and will never (be able). So beware of a fire whose fuel is men and stones prepared for blasphemers.

[\[Quran 42.14\]](#) They only disbanded after they received knowledge (of their Bible) fallaciously among them. And if it were not a word from your Lord [Allah] that postponed it to a later date, it would have been all settled among them then. And those who inherited the Book (the Bible) from them are in great suspicion of it. ¹⁵ Therefore call them (to the Quran) and straighten your ways as you are ordered and don't follow their passions and say: **"I believe in what Allah revealed of the Book (The Quran) and I was ordered to be just among you (both Christians and Jews); Allah is our Lord and your Lord, we have our actions and you have your actions, no argument between us and you, Allah brings us together and to Him we are (all) destined."**

To Moslems:

[\[Quran 6.108\]](#) Do not curse those who call (to worship) other than Allah, so that they don't curse Allah out of spite and ignorance. This is how We [Allah] appealed to each people its own actions; then they will be brought back to their Lord [Allah] who will inform them of what they have been doing.

See also: [Origin of man in Quran: God made Evolution, not instant Creation](#)

[Historical Measurements of Speed of Light](#)

Download Quran: <http://islam.us/downloads.php>